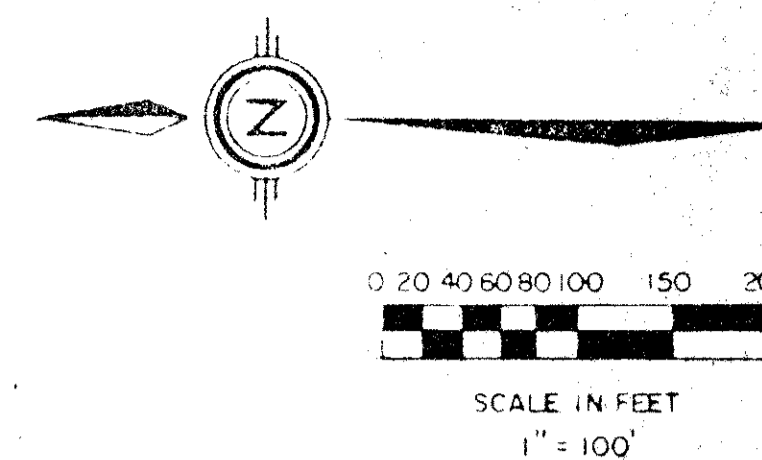


DRAWING NUMBER
52/62

62

GLENEAGLES PLAT SEVEN

PARCEL D, PART OF COVENTRY, A P.U.D.
SITUATE IN SECTION 21, TOWNSHIP 46 SOUTH, RANGE 42 EAST,
PALM BEACH COUNTY, FLORIDA, BEING A REPLAT OF A PORTION
OF GLENEAGLES PLAT ONE, (P.B. 50, P. 63 - 65).



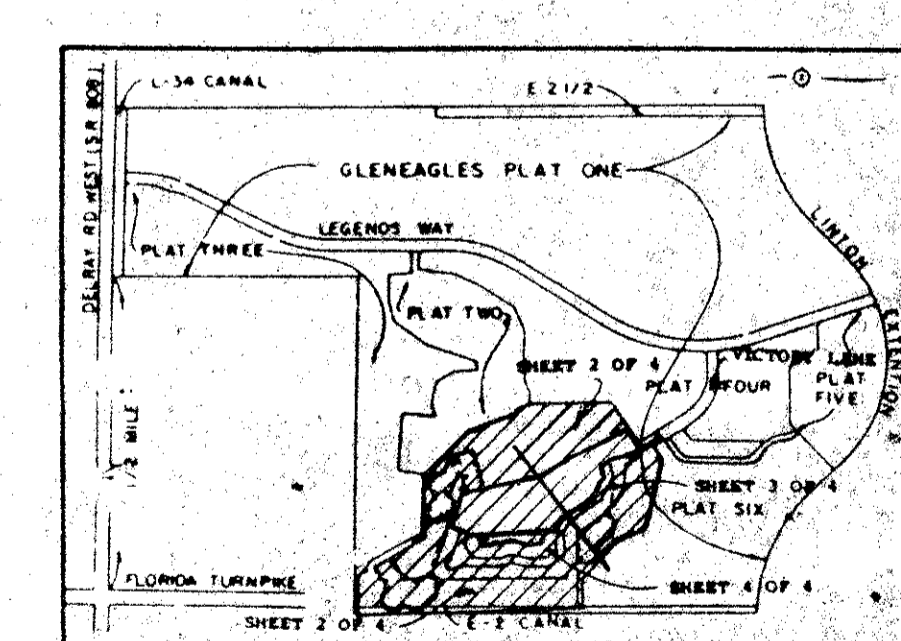
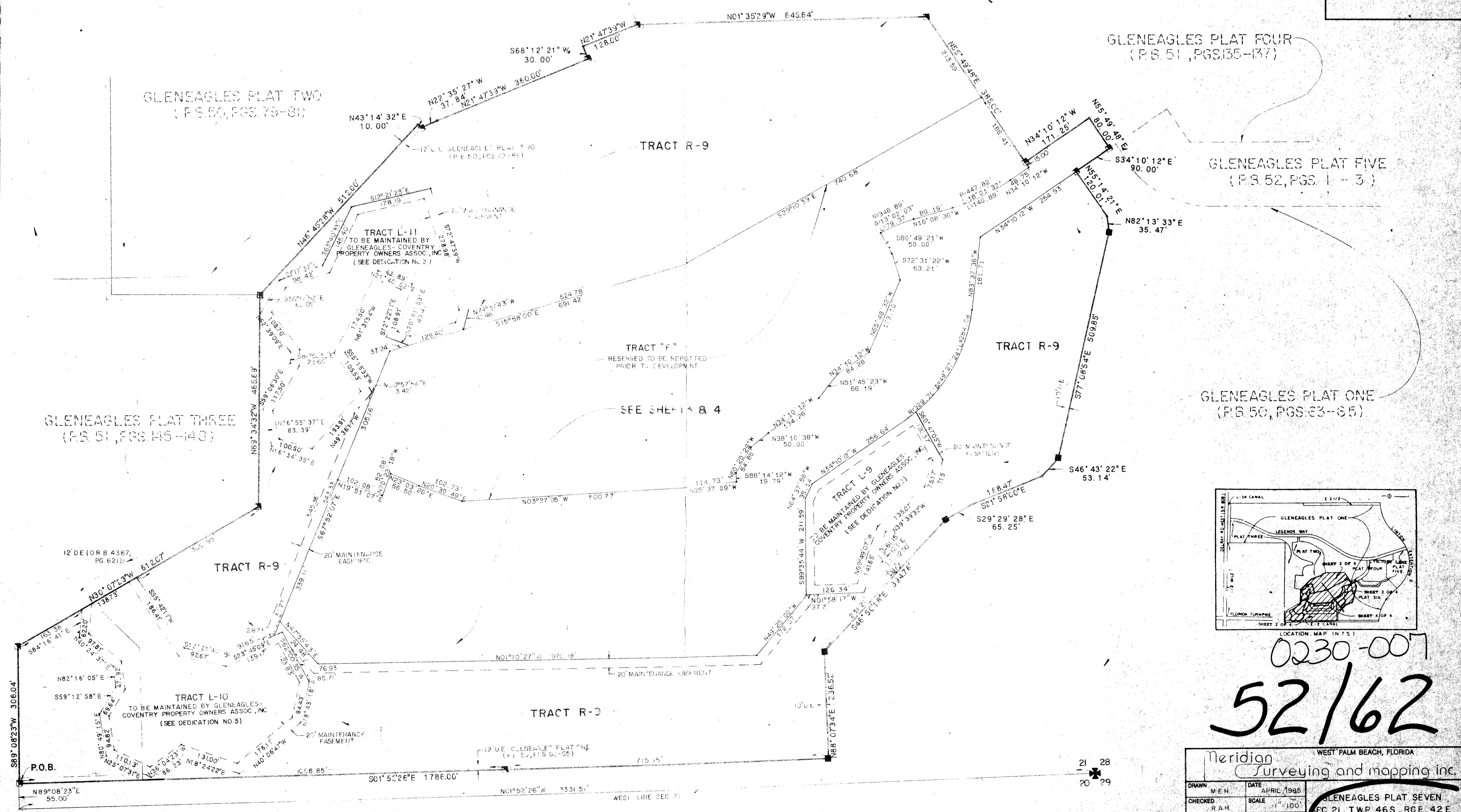
STATE OF FLORIDA
COUNTY OF PALM BEACH
THIS PLAT WAS FILED FOR
RECORD AT _____ DAY OF _____
AD, 1985 AND DULY RECORDED
IN PLAT BOOK _____ ON PAGES
_____ AND _____
JOHN B. DUNKLE, CLERK
BY: _____, D.C.

SHEET 2 OF 4

DRAWING NUMBER

DRAWING NUMBER

DRAWING NUMBER



0230-007
52/62

Meridian Surveying and mapping inc. WEST PALM BEACH, FLORIDA

DRAWN	M.E.H.	DATE	APRIL, 1985
CHECKED	R.A.H.	SCALE	1" = 100'
DRAWING NO.	85-018 PL 7	GLENEAGLES PLAT SEVEN SEC. 21, TWP. 46 S, RGE. 42 E	